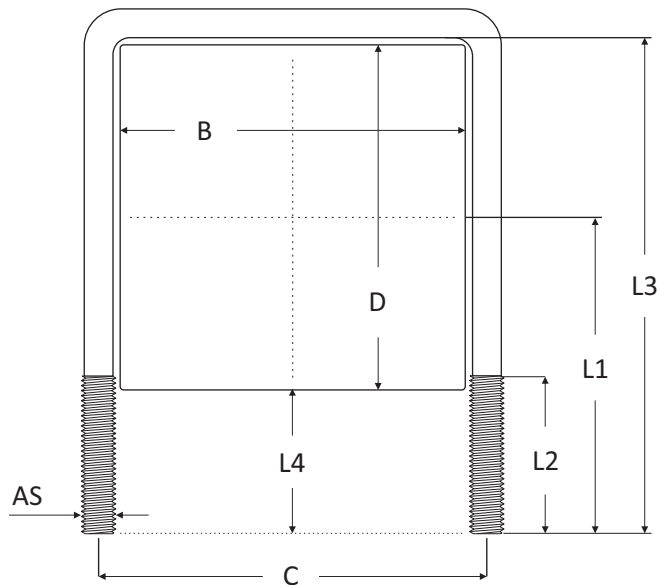
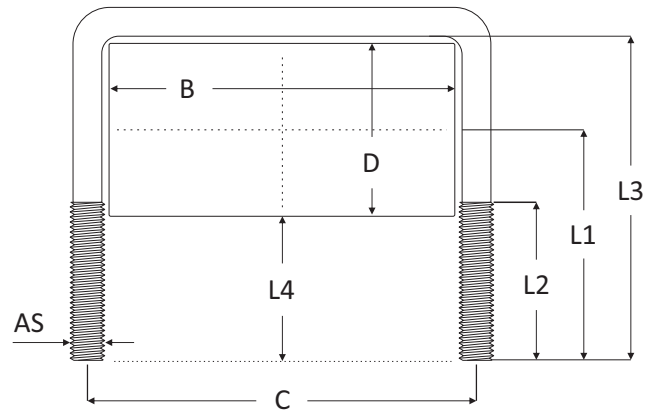


Krambeugels recht

pagina 1 van 3



**Specificaties** : krambeugel rechthoekig compleet programma in verschillende materialen en afmetingen.

- Materiaal : staal S235JR elektrolytisch verzinkt, staal S235JR thermisch verzinkt, RVS A2 304L en RVS A4 316L.
- Materiaal (2) : bij de thermisch verzinkte variant dienen overmaatse moeren gebruikt te worden.
- Toepassing : bevestigen van rechthoek of vierkant kokers in de industrie en installatietechniek.
- Maatwerk : afwijkende maten of afwijkende materiaalsoorten en/of sluitplaatjes vanaf schets of tekening op basis van offerte.
- Herkomst : materiaal Europese oorsprong.

**Krambeugels recht**

pagina 2 van 3

Artikel Nr.	Artikel Nr.	Artikel Nr.	Artikel Nr.	AS	B X D	C	L1	L2	L3	L4
RVS-304	RVS-316	THVZ	ELVZ							
286.02.0201	286.04.0201	-	286.00.0201	<b>M6</b>	<b>20 x 20</b>	28	40	35	50	30
286.02.0202	286.04.0202	-	286.00.0202	<b>M6</b>	<b>20 x 30</b>	28	45	35	60	30
286.02.0203	286.04.0203	-	286.00.0203	<b>M6</b>	<b>20 x 40</b>	28	50	35	70	30
286.02.0204	286.04.0204	-	286.00.0204	<b>M6</b>	<b>20 x 50</b>	28	55	35	80	30
286.02.0251	286.04.0251	-	286.00.0251	<b>M6</b>	<b>25 x 25</b>	33	43	35	55	30
286.02.0301	286.04.0301	-	286.00.0301	<b>M6</b>	<b>30 x 20</b>	38	40	35	50	30
286.02.0302	286.04.0302	-	286.00.0302	<b>M6</b>	<b>30 x 30</b>	38	45	35	60	30
286.12.0303	286.14.0303	286.11.0303	286.10.0303	<b>M8</b>	<b>30 x 60</b>	40	60	35	90	30
286.12.0304	286.14.0304	286.11.0304	286.10.0304	<b>M8</b>	<b>30 x 70</b>	40	65	35	100	30
286.12.0351	286.14.0351	286.11.0351	286.10.0351	<b>M8</b>	<b>35 x 35</b>	45	48	40	65	30
286.02.0401	286.04.0401	-	286.00.0401	<b>M6</b>	<b>40 x 20</b>	48	40	40	50	30
286.12.0402	286.14.0402	286.11.0402	286.10.0402	<b>M8</b>	<b>40 x 40</b>	50	50	40	70	30
286.12.0403	286.14.0403	286.11.0403	286.10.0403	<b>M8</b>	<b>40 x 60</b>	50	60	40	90	30
286.22.0404	286.24.0404	286.21.0404	286.20.0404	<b>M10</b>	<b>40 x 70</b>	52	65	40	100	30
286.22.0405	286.24.0405	286.21.0405	286.20.0405	<b>M10</b>	<b>40 x 80</b>	52	70	40	110	30
286.22.0406	286.24.0406	286.21.0406	286.20.0406	<b>M10</b>	<b>40 x 100</b>	52	80	40	130	30
286.22.0407	286.24.0407	286.21.0407	286.20.0407	<b>M10</b>	<b>40 x 120</b>	52	90	40	150	30
286.02.0501	286.04.0501	-	286.00.0501	<b>M6</b>	<b>50 x 20</b>	58	40	40	50	30
286.12.0502	286.14.0502	286.11.0502	286.10.0502	<b>M8</b>	<b>50 x 30</b>	60	45	40	60	30
286.12.0503	286.14.0503	286.11.0503	286.10.0503	<b>M8</b>	<b>50 x 50</b>	60	55	40	80	30
286.22.0504	286.24.0504	286.21.0504	286.20.0504	<b>M10</b>	<b>50 x 80</b>	62	70	40	110	30
286.22.0505	286.24.0505	286.21.0505	286.20.0505	<b>M10</b>	<b>50 x 90</b>	62	75	40	120	30
286.22.0506	286.24.0506	286.21.0506	286.20.0506	<b>M10</b>	<b>50 x 100</b>	62	80	40	130	30
286.22.0507	286.24.0507	286.21.0507	286.20.0507	<b>M10</b>	<b>50 x 120</b>	62	90	40	150	30
286.12.0601	286.14.0601	286.11.0601	286.10.0601	<b>M8</b>	<b>60 x 30</b>	71	55	50	70	40
286.12.0602	286.14.0602	286.11.0602	286.10.0602	<b>M8</b>	<b>60 x 40</b>	71	60	50	80	40
286.22.0603	286.24.0603	286.21.0603	286.20.0603	<b>M10</b>	<b>60 x 60</b>	73	70	50	100	40
286.22.0604	286.24.0604	286.21.0604	286.20.0604	<b>M10</b>	<b>60 x 80</b>	73	80	50	120	40
286.22.0605	286.24.0605	286.21.0605	286.20.0605	<b>M10</b>	<b>60 x 100</b>	73	90	50	140	40
286.32.0606	286.34.0606	286.31.0606	286.30.0606	<b>M12</b>	<b>60 x 120</b>	75	100	50	160	40
286.12.0701	286.14.0701	286.11.0701	286.10.0701	<b>M8</b>	<b>70 x 30</b>	81	55	50	70	40
286.22.0702	286.24.0702	286.21.0702	286.20.0702	<b>M10</b>	<b>70 x 70</b>	83	75	50	110	40
286.32.0703	286.34.0703	286.31.0703	286.30.0703	<b>M12</b>	<b>70 x 140</b>	85	110	50	180	40
286.32.0751	286.34.0751	286.31.0751	286.30.0751	<b>M12</b>	<b>75 x 150</b>	90	115	50	190	40
286.22.0801	286.24.0801	286.21.0801	286.20.0801	<b>M10</b>	<b>80 x 40</b>	93	60	50	80	40
286.22.0802	286.24.0802	286.21.0802	286.20.0802	<b>M10</b>	<b>80 x 50</b>	93	65	50	90	40
286.22.0803	286.24.0803	286.21.0803	286.20.0803	<b>M10</b>	<b>80 x 60</b>	93	70	50	100	40
286.22.0804	286.24.0804	286.21.0804	286.20.0804	<b>M10</b>	<b>80 x 80</b>	93	80	50	120	40
286.32.0805	286.34.0805	286.31.0805	286.30.0805	<b>M12</b>	<b>80 x 120</b>	95	100	50	160	40
286.32.0806	286.34.0806	286.31.0806	286.30.0806	<b>M12</b>	<b>80 x 140</b>	95	110	50	180	40
286.32.0807	286.34.0807	286.31.0807	286.30.0807	<b>M12</b>	<b>80 x 160</b>	95	120	50	200	40
286.22.0901	286.24.0901	286.21.0901	286.20.0901	<b>M10</b>	<b>90 x 50</b>	103	75	55	100	50
286.32.0902	286.34.0902	286.31.0902	286.30.0902	<b>M12</b>	<b>90 x 90</b>	105	95	55	140	50
286.32.0903	286.34.0903	286.31.0903	286.30.0903	<b>M12</b>	<b>90 x 160</b>	105	130	55	210	50
286.22.1001	286.24.1001	286.21.1001	286.20.1001	<b>M10</b>	<b>100 x 40</b>	113	70	55	90	50
286.22.1002	286.24.1002	286.21.1002	286.20.1002	<b>M10</b>	<b>100 x 50</b>	113	75	55	100	50
286.22.1003	286.24.1003	286.21.1003	286.20.1003	<b>M10</b>	<b>100 x 60</b>	113	80	55	110	50
286.32.1004	286.34.1004	286.31.1004	286.30.1004	<b>M12</b>	<b>100 x 100</b>	115	100	55	150	50
286.32.1005	286.34.1005	286.31.1005	286.30.1005	<b>M12</b>	<b>100 x 150</b>	115	125	55	200	50
286.32.1101	286.34.1101	286.31.1101	286.30.1101	<b>M12</b>	<b>110 x 110</b>	125	105	55	160	50

**Krambeugels recht**

pagina 3 van 3

Artikel Nr.	Artikel Nr.	Artikel Nr.	Artikel Nr.	AS	B X D	C	L1	L2	L3	L4
RVS-304	RVS-316	THVZ	ELVZ							
286.22.1201	286.24.1201	286.21.1201	286.20.1201	<b>M10</b>	<b>120 x 40</b>	133	70	55	90	50
286.22.1202	286.24.1202	286.21.1202	286.20.1202	<b>M10</b>	<b>120 x 50</b>	133	75	55	100	50
286.22.1203	286.24.1203	286.21.1203	286.20.1203	<b>M10</b>	<b>120 x 60</b>	133	80	55	110	50
286.32.1204	286.34.1204	286.31.1204	286.30.1204	<b>M12</b>	<b>120 x 80</b>	135	90	55	130	50
286.32.1205	286.34.1205	286.31.1205	286.30.1205	<b>M12</b>	<b>120 x 120</b>	135	110	55	170	50
286.32.1401	286.34.1401	286.31.1401	286.30.1401	<b>M12</b>	<b>140 x 70</b>	156	95	80	130	60
286.32.1402	286.34.1402	286.31.1402	286.30.1402	<b>M12</b>	<b>140 x 80</b>	156	100	80	140	60
286.42.1403	286.44.1403	286.41.1403	286.40.1403	<b>M16</b>	<b>140 x 140</b>	160	130	80	200	60
286.32.1501	286.34.1501	286.31.1501	286.30.1501	<b>M12</b>	<b>150 x 75</b>	166	98	80	135	60
286.32.1502	286.34.1502	286.31.1502	286.30.1502	<b>M12</b>	<b>150 x 100</b>	166	110	80	160	60
286.42.1503	286.44.1503	286.41.1503	286.40.1503	<b>M16</b>	<b>150 x 150</b>	170	135	80	210	60
286.32.1601	286.34.1601	286.31.1601	286.30.1601	<b>M12</b>	<b>160 x 80</b>	176	100	80	140	60
286.32.1602	286.34.1602	286.31.1602	286.30.1602	<b>M12</b>	<b>160 x 90</b>	176	105	80	150	60
286.42.1603	286.44.1603	286.41.1603	286.40.1603	<b>M16</b>	<b>160 x 160</b>	180	140	80	220	60
286.52.1801	286.54.1801	286.51.1801	286.50.1801	<b>M20</b>	<b>180 x 180</b>	205	150	80	240	60
286.52.2001	286.54.2001	286.51.2001	286.50.2001	<b>M20</b>	<b>200 x 200</b>	225	160	80	260	60
286.52.2501	286.54.2501	286.51.2501	286.50.2501	<b>M20</b>	<b>250 x 250</b>	275	185	80	310	60