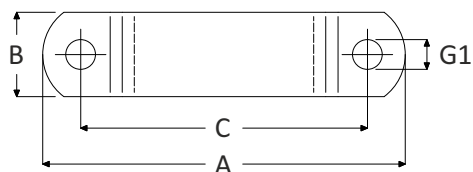
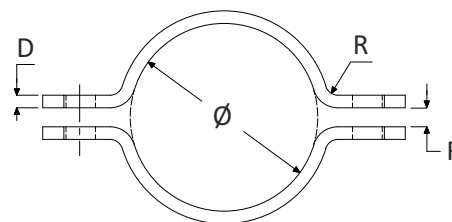


**Kapbeugels DIN 3567 (stel) model A - B - C**

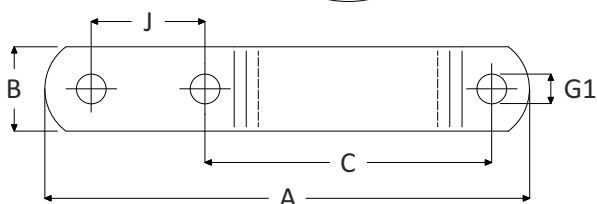
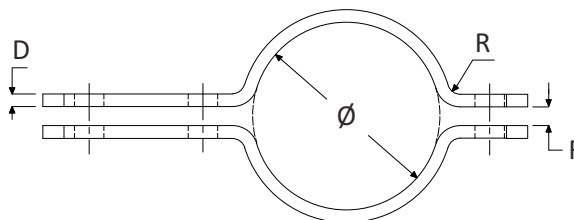
pagina 1 van 5



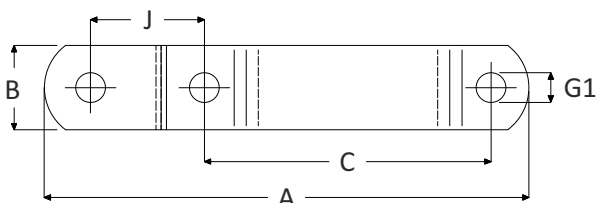
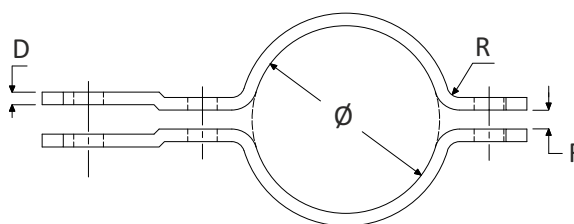
295.0 - Stel kapbeugels DIN 3567 model A - staal / RVS



295.1 - Stel kapbeugels DIN 3567 model B - staal / RVS



295.2 - Stel kapbeugels DIN 3567 model C - staal / RVS



**Specificaties**

- specificaties (\*) : Kapbeugel DIN 3567 in verschillende materialen en afmetingen modellen A - B - C.
- Materiaal (voorraad) : staal S235JR zwart (geschikt als lasbeugel), staal S235 Thermisch verzinkt, RVS A2 304 en RVS A4 316.
- Toepassing : breed inzetbaar om buizen, leidingen of kabels (als vastpuntconstructie) te monteren.
- Maatwerk : productie vanaf schets of tekening in diverse soort materialen en/of nabehandeling.
- Herkomst : materiaal Europese oorsprong.

**Kapbeugels DIN 3567 (stel) model A - B - C**

pagina 2 van 5

Artikel Nr.	Artikel Nr.	Artikel Nr.	Artikel Nr.	model	Ø		DN	A	B x D	C	F	G1	J	R	Montage
					mm	inch									
295.02.0022	295.04.0022	295.09.0022	295.01.0022	A	22	1/2"	15	89	30 x 5	56	7	12		4	M10 x 30
295.12.0022	295.14.0022	295.19.0022	295.11.0022	B	22	1/2"	15	132	30 x 5	56	7	12	46	4	M10 x 30
295.22.0022	295.24.0022	295.29.0022	295.21.0022	C	22	1/2"	15	132	30 x 5	56	7	12	46	4	M10 x 30
295.02.0025	295.04.0025	295.09.0025	295.01.0025	A *	25			92	30 x 5	62	7	12		4	M10 x 30
295.12.0025	295.14.0025	295.19.0025	295.11.0025	B *	25			138	30 x 5	62	7	12	46	4	M10 x 30
295.22.0025	295.24.0025	295.29.0025	295.21.0025	C *	25			138	30 x 5	62	7	12	46	4	M10 x 30
295.02.0027	295.04.0027	295.09.0027	295.01.0027	A	27	3/4"	20	96	30 x 5	66	7	12		4	M10 x 30
295.12.0027	295.14.0027	295.19.0027	295.11.0027	B	27	3/4"	20	142	30 x 5	66	7	12	46	4	M10 x 30
295.22.0027	295.24.0027	295.29.0027	295.21.0027	C	27	3/4"	20	142	30 x 5	66	7	12	46	4	M10 x 30
295.02.0030	295.04.0030	295.09.0030	295.01.0030	A	30			98	30 x 5	68	7	12		4	M10 x 30
295.12.0030	295.14.0030	295.19.0030	295.11.0030	B	30			144	30 x 5	68	7	12	46	4	M10 x 30
295.22.0030	295.24.0030	295.29.0030	295.21.0030	C	30			144	30 x 5	68	7	12	46	4	M10 x 30
295.02.0032	295.04.0032	295.09.0032	295.01.0032	A	32			100	30 x 5	70	7	12		4	M10 x 30
295.12.0032	295.14.0032	295.19.0032	295.11.0032	B	32			146	30 x 5	70	7	12	46	4	M10 x 30
295.22.0032	295.24.0032	295.29.0032	295.21.0032	C	32			146	30 x 5	70	7	12	46	4	M10 x 30
295.02.0034	295.04.0034	295.09.0034	295.01.0034	A	34	1"	25	102	30 x 5	72	7	12		4	M10 x 30
295.12.0034	295.14.0034	295.19.0034	295.11.0034	B	34	1"	25	148	30 x 5	72	7	12	46	4	M10 x 30
295.22.0034	295.24.0034	295.29.0034	295.21.0034	C	34	1"	25	148	30 x 5	72	7	12	46	4	M10 x 30
295.02.0038	295.04.0038	295.09.0038	295.01.0038	A	38			106	30 x 5	76	7	12		4	M10 x 30
295.12.0038	295.14.0038	295.19.0038	295.11.0038	B	38			152	30 x 5	76	7	12	46	4	M10 x 30
295.22.0038	295.24.0038	295.29.0038	295.21.0038	C	38			152	30 x 5	76	7	12	46	4	M10 x 30
295.02.0042	295.04.0042	295.09.0042	295.01.0042	A	42	1 1/4"	32	112	30 x 5	82	7	12		4	M10 x 30
295.12.0042	295.14.0042	295.19.0042	295.11.0042	B	42	1 1/4"	32	158	30 x 5	82	7	12	46	4	M10 x 30
295.22.0042	295.24.0042	295.29.0042	295.21.0042	C	42	1 1/4"	32	158	30 x 5	82	7	12	46	4	M10 x 30
295.02.0045	295.04.0045	295.09.0045	295.01.0045	A	45			114	30 x 5	84	7	12		4	M10 x 30
295.12.0045	295.14.0045	295.19.0045	295.11.0045	B	45			160	30 x 5	84	7	12	46	4	M10 x 30
295.22.0045	295.24.0045	295.29.0045	295.21.0045	C	45			160	30 x 5	84	7	12	46	4	M10 x 30
295.02.0048	295.04.0048	295.09.0048	295.01.0048	A	48	1 1/2"	40	118	30 x 5	88	7	12		4	M10 x 30
295.12.0048	295.14.0048	295.19.0048	295.11.0048	B	48	1 1/2"	40	164	30 x 5	88	7	12	46	4	M10 x 30
295.22.0048	295.24.0048	295.29.0048	295.21.0048	C	48	1 1/2"	40	164	30 x 5	88	7	12	46	4	M10 x 30
295.02.0054	295.04.0054	295.09.0054	295.01.0054	A	54			124	30 x 5	94	7	12		4	M10 x 30
295.12.0054	295.14.0054	295.19.0054	295.11.0054	B	54			170	30 x 5	94	7	12	46	4	M10 x 30
295.22.0054	295.24.0054	295.29.0054	295.21.0054	C	54			170	30 x 5	94	7	12	46	4	M10 x 30
295.02.0057	295.04.0057	295.09.0057	295.01.0057	A	57			136	40 x 6	104	9	14		6	M12 x 40
295.12.0057	295.14.0057	295.19.0057	295.11.0057	B	57			198	40 x 6	104	9	14	54	6	M12 x 40
295.22.0057	295.24.0057	295.29.0057	295.21.0057	C	57			198	40 x 6	104	9	14	54	6	M12 x 40
295.02.0060	295.04.0060	295.09.0060	295.01.0060	A	60	2"	50	144	40 x 6	108	9	14		6	M12 x 40
295.12.0060	295.14.0060	295.19.0060	295.11.0060	B	60	2"	50	202	40 x 6	108	9	14	54	6	M12 x 40
295.22.0060	295.24.0060	295.29.0060	295.21.0060	C	60	2"	50	202	40 x 6	108	9	14	54	6	M12 x 40
295.02.0063	295.04.0063	295.09.0063	295.01.0063	A *	63			147	40 x 6	111	9	14		6	M12 x 40
295.12.0063	295.14.0063	295.19.0063	295.11.0063	B *	63			205	40 x 6	111	9	14	54	6	M12 x 40
295.22.0063	295.24.0063	295.29.0063	295.21.0063	C *	63			205	40 x 6	111	9	14	54	6	M12 x 40
295.02.0066	295.04.0066	295.09.0066	295.01.0066	A *	66			150	40 x 6	114	9	14		6	M12 x 40
295.12.0066	295.14.0066	295.19.0066	295.11.0066	B *	66			208	40 x 6	114	9	14	54	6	M12 x 40
295.22.0066	295.24.0066	295.29.0066	295.21.0066	C *	66			208	40 x 6	114	9	14	54	6	M12 x 40
295.02.0070	295.04.0070	295.09.0070	295.01.0070	A *	70			154	40 x 6	118	9	14		6	M12 x 40
295.12.0070	295.14.0070	295.19.0070	295.11.0070	B *	70			212	40 x 6	118	9	14	54	6	M12 x 40
295.22.0070	295.24.0070	295.29.0070	295.21.0070	C *	70			212	40 x 6	118	9	14	54	6	M12 x 40

**Kapbeugels DIN 3567 (stel) model A - B - C**

pagina 3 van 5

Artikel Nr. <b>RVS-304</b>	Artikel Nr. <b>RVS-316</b>	Artikel Nr. <b>S235 zwart</b>	Artikel Nr. <b>THVZ</b>	model	Ø		DN	A	B x D	C	F	G1	J	R	Montage
					mm	inch									
295.02.0076	295.04.0076	295.09.0076	295.01.0076	<b>A</b>	<b>76</b>	<b>2 1/2"</b>	65	158	40 x 6	122	9	14		6	M12 x 40
295.12.0076	295.14.0076	295.19.0076	295.11.0076	<b>B</b>	<b>76</b>	<b>2 1/2"</b>	65	216	40 x 6	122	9	14	54	6	M12 x 40
295.22.0076	295.24.0076	295.29.0076	295.21.0076	<b>C</b>	<b>76</b>	<b>2 1/2"</b>	65	216	40 x 6	122	9	14	54	6	M12 x 40
295.02.0080	295.04.0080	295.09.0080	295.01.0080	<b>A *</b>	<b>80</b>			162	40 x 6	126	9	14		6	M12 x 40
295.12.0080	295.14.0080	295.19.0080	295.11.0080	<b>B *</b>	<b>80</b>			220	40 x 6	126	9	14	54	6	M12 x 40
295.22.0080	295.24.0080	295.29.0080	295.21.0080	<b>C *</b>	<b>80</b>			220	40 x 6	126	9	14	54	6	M12 x 40
295.02.0083	295.04.0083	295.09.0083	295.01.0083	<b>A *</b>	<b>83</b>			165	40 x 6	129	9	14		6	M12 x 40
295.12.0083	295.14.0083	295.19.0083	295.11.0083	<b>B *</b>	<b>83</b>			223	40 x 6	129	9	14	54	6	M12 x 40
295.22.0083	295.24.0083	295.29.0083	295.21.0083	<b>C *</b>	<b>83</b>			223	40 x 6	129	9	14	54	6	M12 x 40
295.02.0089	295.04.0089	295.09.0089	295.01.0089	<b>A</b>	<b>89</b>	<b>3"</b>	80	172	40 x 6	136	9	14		6	M12 x 40
295.12.0089	295.14.0089	295.19.0089	295.11.0089	<b>B</b>	<b>89</b>	<b>3"</b>	80	230	40 x 6	136	9	14	54	6	M12 x 40
295.22.0089	295.24.0089	295.29.0089	295.21.0089	<b>C</b>	<b>89</b>	<b>3"</b>	80	230	40 x 6	136	9	14	54	6	M12 x 40
295.02.0095	295.04.0095	295.09.0095	295.01.0095	<b>A</b>	<b>95</b>			178	40 x 6	142	9	14		6	M12 x 40
295.12.0095	295.14.0095	295.19.0095	295.11.0095	<b>B</b>	<b>95</b>			236	40 x 6	142	9	14	54	6	M12 x 40
295.22.0095	295.24.0095	295.29.0095	295.21.0095	<b>C</b>	<b>95</b>			236	40 x 6	142	9	14	54	6	M12 x 40
295.02.0102	295.04.0102	295.09.0102	295.01.0102	<b>A</b>	<b>102</b>	<b>3 1/2"</b>	90	185	40 x 6	149	9	14		6	M12 x 40
295.12.0102	295.14.0102	295.19.0102	295.11.0102	<b>B</b>	<b>102</b>	<b>3 1/2"</b>	90	243	40 x 6	149	9	14	54	6	M12 x 40
295.22.0102	295.24.0102	295.29.0102	295.21.0102	<b>C</b>	<b>102</b>	<b>3 1/2"</b>	90	243	40 x 6	149	9	14	54	6	M12 x 40
295.02.0108	295.04.0108	295.09.0108	295.01.0108	<b>A</b>	<b>108</b>			220	50 x 8	172	11	18		6	M16 x 50
295.12.0108	295.14.0108	295.19.0108	295.11.0108	<b>B</b>	<b>108</b>			290	50 x 8	172	11	18	70	6	M16 x 50
295.22.0108	295.24.0108	295.29.0108	295.21.0108	<b>C</b>	<b>108</b>			290	50 x 8	172	11	18	70	6	M16 x 50
295.02.0114	295.04.0114	295.09.0114	295.01.0114	<b>A</b>	<b>114</b>	<b>4"</b>	100	226	50 x 8	178	11	18		6	M16 x 50
295.12.0114	295.14.0114	295.19.0114	295.11.0114	<b>B</b>	<b>114</b>	<b>4"</b>	100	296	50 x 8	178	11	18	70	6	M16 x 50
295.22.0114	295.24.0114	295.29.0114	295.21.0114	<b>C</b>	<b>114</b>	<b>4"</b>	100	296	50 x 8	178	11	18	70	6	M16 x 50
295.02.0120	295.04.0120	295.09.0120	295.01.0120	<b>A *</b>	<b>120</b>			232	50 x 8	184	11	18		6	M16 x 50
295.12.0120	295.14.0120	295.19.0120	295.11.0120	<b>B *</b>	<b>120</b>			302	50 x 8	184	11	18	70	6	M16 x 50
295.22.0120	295.24.0120	295.29.0120	295.21.0120	<b>C *</b>	<b>120</b>			302	50 x 8	184	11	18	70	6	M16 x 50
295.02.0127	295.04.0127	295.09.0127	295.01.0127	<b>A</b>	<b>127</b>			239	50 x 8	191	11	18		6	M16 x 50
295.12.0127	295.14.0127	295.19.0127	295.11.0127	<b>B</b>	<b>127</b>			309	50 x 8	191	11	18	70	6	M16 x 50
295.22.0127	295.24.0127	295.29.0127	295.21.0127	<b>C</b>	<b>127</b>			309	50 x 8	191	11	18	70	6	M16 x 50
295.02.0133	295.04.0133	295.09.0133	295.01.0133	<b>A</b>	<b>133</b>			245	50 x 8	197	11	18		6	M16 x 50
295.12.0133	295.14.0133	295.19.0133	295.11.0133	<b>B</b>	<b>133</b>			314	50 x 8	197	11	18	70	6	M16 x 50
295.22.0133	295.24.0133	295.29.0133	295.21.0133	<b>C</b>	<b>133</b>			314	50 x 8	197	11	18	70	6	M16 x 50
295.02.0140	295.04.0140	295.09.0140	295.01.0140	<b>A</b>	<b>140</b>	<b>5"</b>	125	252	50 x 8	204	11	18		6	M16 x 50
295.12.0140	295.14.0140	295.19.0140	295.11.0140	<b>B</b>	<b>140</b>	<b>5"</b>	125	322	50 x 8	204	11	18	70	6	M16 x 50
295.22.0140	295.24.0140	295.29.0140	295.21.0140	<b>C</b>	<b>140</b>	<b>5"</b>	125	322	50 x 8	204	11	18	70	6	M16 x 50
295.02.0146	295.04.0146	295.09.0146	295.01.0146	<b>A *</b>	<b>146</b>			258	50 x 8	210	11	18		6	M16 x 50
295.12.0146	295.14.0146	295.19.0146	295.11.0146	<b>B *</b>	<b>146</b>			328	50 x 8	210	11	18	70	6	M16 x 50
295.22.0146	295.24.0146	295.29.0146	295.21.0146	<b>C *</b>	<b>146</b>			328	50 x 8	210	11	18	70	6	M16 x 50
295.02.0152	295.04.0152	295.09.0152	295.01.0152	<b>A</b>	<b>152</b>			264	50 x 8	216	11	18		6	M16 x 50
295.12.0152	295.14.0152	295.19.0152	295.11.0152	<b>B</b>	<b>152</b>			334	50 x 8	216	11	18	70	6	M16 x 50
295.22.0152	295.24.0152	295.29.0152	295.21.0152	<b>C</b>	<b>152</b>			334	50 x 8	216	11	18	70	6	M16 x 50
295.02.0159	295.04.0159	295.09.0159	295.01.0159	<b>A</b>	<b>159</b>			270	50 x 8	222	11	18		6	M16 x 50
295.12.0159	295.14.0159	295.19.0159	295.11.0159	<b>B</b>	<b>159</b>			340	50 x 8	222	11	18	70	6	M16 x 50
295.22.0159	295.24.0159	295.29.0159	295.21.0159	<b>C</b>	<b>159</b>			340	50 x 8	222	11	18	70	6	M16 x 50
295.02.0165	295.04.0165	295.09.0165	295.01.0165	<b>A</b>	<b>165</b>			276	50 x 8	228	11	18		6	M16 x 50
295.12.0165	295.14.0165	295.19.0165	295.11.0165	<b>B</b>	<b>165</b>			346	50 x 8	228	11	18	70	6	M16 x 50
295.22.0165	295.24.0165	295.29.0165	295.21.0165	<b>C</b>	<b>165</b>			346	50 x 8	228	11	18	70	6	M16 x 50

**Kapbeugels DIN 3567 (stel) model A - B - C**

pagina 4 van 5

Artikel Nr. <b>RVS-304</b>	Artikel Nr. <b>RVS-316</b>	Artikel Nr. <b>S235 zwart</b>	Artikel Nr. <b>THVZ</b>	model	Ø		DN	A	B x D	C	F	G1	J	R	Montage
					mm	inch									
295.02.0168	295.04.0168	295.09.0168	295.01.0168	<b>A</b>	<b>168</b>	<b>6"</b>	150	280	50 x 8	232	11	18		6	M16 x 50
295.12.0168	295.14.0168	295.19.0168	295.11.0168	<b>B</b>	<b>168</b>	<b>6"</b>	150	350	50 x 8	232	11	18	70	6	M16 x 50
295.22.0168	295.24.0168	295.29.0168	295.21.0168	<b>C</b>	<b>168</b>	<b>6"</b>	150	350	50 x 8	232	11	18	70	6	M16 x 50
295.02.0174	295.04.0174	295.09.0174	295.01.0174	<b>A *</b>	<b>174</b>			286	50 x 8	238	11	18		6	M16 x 50
295.12.0174	295.14.0174	295.19.0174	295.11.0174	<b>B *</b>	<b>174</b>			356	50 x 8	238	11	18	70	6	M16 x 50
295.22.0174	295.24.0174	295.29.0174	295.21.0174	<b>C *</b>	<b>174</b>			356	50 x 8	238	11	18	70	6	M16 x 50
295.02.0178	295.04.0178	295.09.0178	295.01.0178	<b>A</b>	<b>178</b>			290	50 x 8	242	11	18		6	M16 x 50
295.12.0178	295.14.0178	295.19.0178	295.11.0178	<b>B</b>	<b>178</b>			360	50 x 8	242	11	18	70	6	M16 x 50
295.22.0178	295.24.0178	295.29.0178	295.21.0178	<b>C</b>	<b>178</b>			360	50 x 8	242	11	18	70	6	M16 x 50
295.02.0191	295.04.0191	295.09.0191	295.01.0191	<b>A</b>	<b>191</b>			302	50 x 8	254	11	18		6	M16 x 50
295.12.0191	295.14.0191	295.19.0191	295.11.0191	<b>B</b>	<b>191</b>			372	50 x 8	254	11	18	70	6	M16 x 50
295.22.0191	295.24.0191	295.29.0191	295.21.0191	<b>C</b>	<b>191</b>			372	50 x 8	254	11	18	70	6	M16 x 50
295.02.0194	295.04.0194	295.09.0194	295.01.0194	<b>A</b>	<b>194</b>	<b>7"</b>	175	306	50 x 8	258	11	18		6	M16 x 50
295.12.0194	295.14.0194	295.19.0194	295.11.0194	<b>B</b>	<b>194</b>	<b>7"</b>	175	376	50 x 8	258	11	18	70	6	M16 x 50
295.22.0194	295.24.0194	295.29.0194	295.21.0194	<b>C</b>	<b>194</b>	<b>7"</b>	175	376	50 x 8	258	11	18	70	6	M16 x 50
295.02.0203	295.04.0203	295.09.0203	295.01.0203	<b>A</b>	<b>203</b>			315	50 x 8	267	11	18		6	M16 x 50
295.12.0203	295.14.0203	295.19.0203	295.11.0203	<b>B</b>	<b>203</b>			385	50 x 8	267	11	18	70	6	M16 x 50
295.22.0203	295.24.0203	295.29.0203	295.21.0203	<b>C</b>	<b>203</b>			385	50 x 8	267	11	18	70	6	M16 x 50
295.02.0216	295.04.0216	295.09.0216	295.01.0216	<b>A</b>	<b>216</b>			328	50 x 8	280	11	18		6	M16 x 50
295.12.0216	295.14.0216	295.19.0216	295.11.0216	<b>B</b>	<b>216</b>			389	50 x 8	280	11	18	70	6	M16 x 50
295.22.0216	295.24.0216	295.29.0216	295.21.0216	<b>C</b>	<b>216</b>			389	50 x 8	280	11	18	70	6	M16 x 50
295.02.0219	295.04.0219	295.09.0219	295.01.0219	<b>A</b>	<b>219</b>	<b>8"</b>	200	332	50 x 8	284	11	18		6	M16 x 50
295.12.0219	295.14.0219	295.19.0219	295.11.0219	<b>B</b>	<b>219</b>	<b>8"</b>	200	402	50 x 8	284	11	18	70	6	M16 x 50
295.22.0219	295.24.0219	295.29.0219	295.21.0219	<b>C</b>	<b>219</b>	<b>8"</b>	200	402	50 x 8	284	11	18	70	6	M16 x 50
295.02.0226	295.04.0226	295.09.0226	295.01.0226	<b>A *</b>	<b>226</b>			339	50 x 8	291	11	18		6	M16 x 50
295.12.0226	295.14.0226	295.19.0226	295.11.0226	<b>B *</b>	<b>226</b>			409	50 x 8	291	11	18	70	6	M16 x 50
295.22.0226	295.24.0226	295.29.0226	295.21.0226	<b>C *</b>	<b>226</b>			409	50 x 8	291	11	18	70	6	M16 x 50
295.02.0241	295.04.0241	295.09.0241	295.01.0241	<b>A *</b>	<b>241</b>			354	50 x 8	306	11	18		6	M16 x 50
295.12.0241	295.14.0241	295.19.0241	295.11.0241	<b>B *</b>	<b>241</b>			424	50 x 8	306	11	18	70	6	M16 x 50
295.22.0241	295.24.0241	295.29.0241	295.21.0241	<b>C *</b>	<b>241</b>			424	50 x 8	306	11	18	70	6	M16 x 50
295.02.0245	295.04.0245	295.09.0245	295.01.0245	<b>A *</b>	<b>245</b>			358	50 x 8	310	11	18		6	M16 x 50
295.12.0245	295.14.0245	295.19.0245	295.11.0245	<b>B *</b>	<b>245</b>			428	50 x 8	310	11	18	70	6	M16 x 50
295.22.0245	295.24.0245	295.29.0245	295.21.0245	<b>C *</b>	<b>245</b>			428	50 x 8	310	11	18	70	6	M16 x 50
295.02.0253	295.04.0253	295.09.0253	295.01.0253	<b>A</b>	<b>253</b>			366	50 x 8	318	11	18		6	M16 x 50
295.12.0253	295.14.0253	295.19.0253	295.11.0253	<b>B</b>	<b>253</b>			436	50 x 8	318	11	18	70	6	M16 x 50
295.22.0253	295.24.0253	295.29.0253	295.21.0253	<b>C</b>	<b>253</b>			436	50 x 8	318	11	18	70	6	M16 x 50
295.02.0267	295.04.0267	295.09.0267	295.01.0267	<b>A</b>	<b>267</b>			402	60 x 8	342	14	22		8	M20 x 60
295.12.0267	295.14.0267	295.19.0267	295.11.0267	<b>B</b>	<b>267</b>			488	60 x 8	342	14	22	86	8	M20 x 60
295.22.0267	295.24.0267	295.29.0267	295.21.0267	<b>C</b>	<b>267</b>			488	60 x 8	342	14	22	86	8	M20 x 60
295.02.0273	295.04.0273	295.09.0273	295.01.0273	<b>A</b>	<b>273</b>	<b>10"</b>	250	408	60 x 8	348	14	22		8	M20 x 60
295.12.0273	295.14.0273	295.19.0273	295.11.0273	<b>B</b>	<b>273</b>	<b>10"</b>	250	494	60 x 8	348	14	22	86	8	M20 x 60
295.22.0273	295.24.0273	295.29.0273	295.21.0273	<b>C</b>	<b>273</b>	<b>10"</b>	250	494	60 x 8	348	14	22	86	8	M20 x 60
295.02.0300	295.04.0300	295.09.0300	295.01.0300	<b>A *</b>	<b>300</b>			435	60 x 8	375	14	22		8	M20 x 60
295.12.0300	295.14.0300	295.19.0300	295.11.0300	<b>B *</b>	<b>300</b>			521	60 x 8	375	14	22	86	8	M20 x 60
295.22.0300	295.24.0300	295.29.0300	295.21.0300	<b>C *</b>	<b>300</b>			521	60 x 8	375	14	22	86	8	M20 x 60
295.02.0318	295.04.0318	295.09.0318	295.01.0318	<b>A</b>	<b>318</b>			452	60 x 8	392	14	22		8	M20 x 60
295.12.0318	295.14.0318	295.19.0318	295.11.0318	<b>B</b>	<b>318</b>			538	60 x 8	392	14	22	86	8	M20 x 60
295.22.0318	295.24.0318	295.29.0318	295.21.0318	<b>C</b>	<b>318</b>			538	60 x 8	392	14	22	86	8	M20 x 60

**Kapbeugels DIN 3567 (stel) model A - B - C**

pagina 5 van 5

Artikel Nr. <b>RVS-304</b>	Artikel Nr. <b>RVS-316</b>	Artikel Nr. <b>S235 zwart</b>	Artikel Nr. <b>THVZ</b>	model	Ø		DN	A	B x D	C	F	G1	J	R	Montage
					mm	inch									
295.02.0324	295.04.0324	295.09.0324	295.01.0324	<b>A</b>	<b>324</b>	<b>12"</b>	300	458	60 x 8	398	14	22		8	M20 x 60
295.12.0324	295.14.0324	295.19.0324	295.11.0324	<b>B</b>	<b>324</b>	<b>12"</b>	300	544	60 x 8	398	14	22	86	8	M20 x 60
295.22.0324	295.24.0324	295.29.0324	295.21.0324	<b>C</b>	<b>324</b>	<b>12"</b>	300	544	60 x 8	398	14	22	86	8	M20 x 60
295.02.0356	295.04.0356	295.09.0356	295.01.0356	<b>A</b>	<b>356</b>	<b>14"</b>	350	492	60 x 8	432	14	22		8	M20 x 60
295.12.0356	295.14.0356	295.19.0356	295.11.0356	<b>B</b>	<b>356</b>	<b>14"</b>	350	578	60 x 8	432	14	22	86	8	M20 x 60
295.22.0356	295.24.0356	295.29.0356	295.21.0356	<b>C</b>	<b>356</b>	<b>14"</b>	350	578	60 x 8	432	14	22	86	8	M20 x 60
295.02.0368	295.04.0368	295.09.0368	295.01.0368	<b>A</b>	<b>368</b>			504	60 x 8	444	14	22		8	M20 x 60
295.12.0368	295.14.0368	295.19.0368	295.11.0368	<b>B</b>	<b>368</b>			590	60 x 8	444	14	22	86	8	M20 x 60
295.22.0368	295.24.0368	295.29.0368	295.21.0368	<b>C</b>	<b>368</b>			590	60 x 8	444	14	22	86	8	M20 x 60
295.02.0406	295.04.0406	295.09.0406	295.01.0406	<b>A</b>	<b>406</b>	<b>16"</b>	400	570	70 x 10	498	18	27		10	M24 X 80
295.12.0406	295.14.0406	295.19.0406	295.11.0406	<b>B</b>	<b>406</b>	<b>16"</b>	400	672	70 x 10	498	18	27	104	10	M24 X 80
295.22.0406	295.24.0406	295.29.0406	295.21.0406	<b>C</b>	<b>406</b>	<b>16"</b>	400	672	70 x 10	498	18	27	104	10	M24 X 80
295.02.0420	295.04.0420	295.09.0420	295.01.0420	<b>A</b>	<b>420</b>			582	70 x 10	510	18	27		10	M24 X 80
295.12.0420	295.14.0420	295.19.0420	295.11.0420	<b>B</b>	<b>420</b>			684	70 x 10	510	18	27	104	10	M24 X 80
295.22.0420	295.24.0420	295.29.0420	295.21.0420	<b>C</b>	<b>420</b>			684	70 x 10	510	18	27	104	10	M24 X 80
295.02.0457	295.04.0457	295.09.0457	295.01.0457	<b>A</b>	<b>457</b>	<b>18"</b>	450	619	70 x 10	547	18	27		10	M24 X 80
295.12.0457	295.14.0457	295.19.0457	295.11.0457	<b>B</b>	<b>457</b>	<b>18"</b>	450	721	70 x 10	547	18	27	104	10	M24 X 80
295.22.0457	295.24.0457	295.29.0457	295.21.0457	<b>C</b>	<b>457</b>	<b>18"</b>	450	721	70 x 10	547	18	27	104	10	M24 X 80
295.02.0508	295.04.0508	295.09.0508	295.01.0508	<b>A</b>	<b>508</b>	<b>20"</b>	500	672	70 x 10	600	18	27		10	M24 X 80
295.12.0508	295.14.0508	295.19.0508	295.11.0508	<b>B</b>	<b>508</b>	<b>20"</b>	500	774	70 x 10	600	18	27	104	10	M24 X 80
295.22.0508	295.24.0508	295.29.0508	295.21.0508	<b>C</b>	<b>508</b>	<b>20"</b>	500	774	70 x 10	600	18	27	104	10	M24 X 80
295.02.0520	295.04.0520	295.09.0520	295.01.0520	<b>A</b>	<b>520</b>			686	70 x 10	614	18	27		10	M24 X 80
295.12.0520	295.14.0520	295.19.0520	295.11.0520	<b>B</b>	<b>520</b>			788	70 x 10	614	18	27	104	10	M24 X 80
295.22.0520	295.24.0520	295.29.0520	295.21.0520	<b>C</b>	<b>520</b>			788	70 x 10	614	18	27	104	10	M24 X 80
295.02.0559	295.04.0559	295.09.0559	295.01.0559	<b>A *</b>	<b>559</b>	<b>22"</b>	550	725	70 x 10	653	18	27		10	M24 X 80
295.12.0559	295.14.0559	295.19.0559	295.11.0559	<b>B *</b>	<b>559</b>	<b>22"</b>	550	827	70 x 10	653	18	27	104	10	M24 X 80
295.22.0559	295.24.0559	295.29.0559	295.21.0559	<b>C *</b>	<b>559</b>	<b>22"</b>	550	827	70 x 10	653	18	27	104	10	M24 X 80
295.02.0610	295.04.0610	295.09.0610	295.01.0610	<b>A</b>	<b>610</b>	<b>24"</b>	600	776	70 x 10	704	18	27		10	M24 X 80
295.12.0610	295.14.0610	295.19.0610	295.11.0610	<b>B</b>	<b>610</b>	<b>24"</b>	600	878	70 x 10	704	18	27	104	10	M24 X 80
295.22.0610	295.24.0610	295.29.0610	295.21.0610	<b>C</b>	<b>610</b>	<b>24"</b>	600	878	70 x 10	704	18	27	104	10	M24 X 80
295.02.0710	295.04.0710	295.09.0710	295.01.0710	<b>A</b>	<b>710</b>	<b>28"</b>	700	876	70 x 10	804	18	27		10	M24 X 80
-	-	295.09.0812	295.01.0812	<b>A</b>	<b>812</b>	<b>32"</b>	800	978	70 x 10	906	18	27		10	M24 X 80